



The Creative Teacher Programme (CTP)



Designed by OLEVI and facilitated by experienced school leaders and teachers, the highly effective and motivating Creative Teacher Programme equips teachers, who want to grow their practice, a set of skills and strategies to enhance their craft, adding more value in the classroom. Utilised in the London and City Challenge Projects and endorsed by the then National College, the CTP (formally known as the Improving Teacher Programme, ITP) has gained a national reputation for raising standards in teaching and learning.

Objectives

To enable teachers to:

- ▲ Provide their pupils with the best possible learning experience.
- ▲ Improve standards in their classrooms and schools.
- ▲ Increase their job satisfaction and quality of experience.
- ▲ Work more effectively as active members of their school team.
- ▲ Be more reflective and creative in their craft.

Impact

“The most profound impact the programme has had, is on the delegates’ expectations of what their students can do and consequently now raise the bar. The challenging of expectations has not only seen an increase in student performance but, in addition, has raised the students’ own expectations of the quality of their teaching.”

Sharon Jeffs, Head of Learning, Robert Bloomfield Academy

Vision

To give the teaching profession the tools and strategies; challenge and inspiration to engage in excellence – raising the quality of teaching practice to ensure every student in every school enjoys outstanding teaching and learning outcomes.

Creative Teacher Programme (CTP)



The programme is a key part of the OLEVI portfolio of school-to-school support, which is helping to increase capacity and drive up standards in schools. Among many benefits this programme helps school staff consistently facilitate good quality lessons that have a measurable impact on pupil performance.

The Creative Teacher Programme:

- ▲ Provides teachers with in-depth coaching, tailored to a self-assessment of their teaching. It provides opportunities to deepen their understanding of high-quality classroom practice and teaching and learning. Participants improve their teaching through facilitated practice, observation of colleagues and working with 'live' students.
- ▲ Supports a wider range of teaching activities, including: planning lessons, learning activities, reviewing learning, questioning techniques, engaging in learning, challenging learning, assessment and feedback, and differentiation strategies.
- ▲ Builds confidence of staff to be resilient, reflective and confident practitioners.

Eligibility

This programme is open to all teachers who want to develop their teaching practice.

Impact

"It has completely transformed my life, both in and out of the school and that of my students".

Programme Delegate

"We recognise and value how the programme is integral to developing excellent classroom practice. We have made a commitment to all our NQTs+1 teachers, ensuring that having a place on the programme is an entitlement."

Primary Excellence

"Those who have been on the programme choose to spend time with each other in order to have continued and constructive discussions around the improvement of their teaching and learning, and school improvement. The programme has promoted a healthy dialogue amongst staff."

Robert Bloomfield,

"We believe the impact of the programme has been hugely significant in raising the standard of teaching and learning within our school. All recently qualified teachers take part in the programme as part of their ongoing training, even if their teaching is consistently judged to be good or outstanding. It is seen as an opportunity to share good practice and learn from other settings."

Mary Rose Academy.

"The programme made me think about every lesson in a slightly different light, focusing on what is actually important: Are the pupils engaged? Are they challenged by the activities? Can you assess their progress? It was not extra work for teachers or just another hoop to jump through, but a way of thinking that is beneficial to any, or all lessons. It was so enjoyable."

Ashton on Mersey School

Commitment

The programme consists of 6 x 1/2 day facilitated sessions over a six week period. Ideally, secondary schools would need to release three teachers – learning3s; primary and special schools may prefer to release one teacher as learning 3s can come from cluster schools. The development of these teachers is supported by a coach at each school who attends the first and final session, and supports the teachers' progress through the programme in their schools. This is an important coaching role that is pivotal to the success of the delegates.

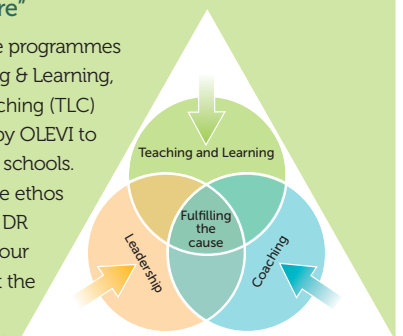
Cost

RRP £575 (+or-5% excluding VAT) per delegate.

"The Bigger Picture"

CTP is just one of the programmes in the OLEVI Teaching & Learning, Leadership, and Coaching (TLC) Syllabus, developed by OLEVI to drive up standards in schools.

Structured around the ethos and principles of our DR ICE® learning model our programmes support the growth of education professionals at every level, to create a successful teaching and learning culture that leaves a lasting legacy.



OLEVI International Ltd
Jariram
6 Gladstone Road,
Farnborough,
Orpington,
Kent
BR6 7EA

t: 01689 605939
e: mb@olevi.com

For further information and dates of OLEVI programmes facilitated at OLEVI HQ, please contact Mona Bhatti: mb@olevi.com or visit our website.

Our Designated OLEVI Centres, some of whom are licensed to facilitate the full range of OLEVI programmes within their regions, and OLEVI Licensed Member Schools, who are accredited to facilitate delegate level programmes, are located throughout the UK and internationally.

To find a Designated OLEVI Centre or an OLEVI Licensed Member School near you, visit the partners section on our website: www.olevi.com